



athulial
ayurveda

Rooted in Tradition. Committed to Wellness.



NATURAL



AUTHENTIC



HOLISTIC



Product
Catalog

EMPOWERING WEALTH
THROUGH WELLNESS.

Index

- **Founder's Message**
- **Introduction**
- **About Us**
- **Our Mission, Vision**
- **Our Philosophy**
- **What We offer ? , Our Promise & Why Choose Us?**
- **Immunity Management Range**
- **Digestion Management Range**
- **Diabetes Management Range**
- **Ortho Management Range**
- **Heart Health Management Range**
- **Mental Health Management Range**
- **Liver Health Management Range**
- **Blood Detox Range**
- **Weight Management Range**
- **Kids Health Management Range**
- **Eye Care Range**
- **Health Management Range for Women**
- **Health Management Range for - Men**
- **Ayurvedic Refreshment Blends**
- **Personal Care Product Range**
- **Home & Hygeine Range**
- **Hormonal Health Management Range**
- **Kidney Health Management Range**
- **Lungs Health Management Range**



Founder's Message

Dear Athulians!

We believe that true wealth begins with wellness, and this belief has come to life because of each and every Athulian. Your trust, dedication, and commitment have been the foundation of our growth.

We thank you for embracing our vision, sharing honest, science-backed wellness solutions, and building meaningful opportunities through ethical direct selling. Your efforts are not just growing a business — they are creating healthier lives, stronger livelihoods, and empowered communities.

Together, we are not just offering products; we are nurturing confidence, independence, and sustainable growth. I am deeply grateful to every Athulian for being an integral part of this journey and helping us grow with purpose.





Athuliam Ayurveda – The Essence of Complete Wellness

Rooted in the timeless science of Ayurveda, Athuliam Ayurveda is a journey towards wholeness, balance, and natural healing. The word Athuliam signifies incomparable, complete, and perfect—values that we bring into every formulation.

We believe that true wellness is not just the absence of illness, but the harmonious balance of body, mind, and spirit. Guided by Ayurvedic principles and enriched with nature's finest herbs, every Athuliam product is designed to restore balance, strengthen immunity, and nurture beauty from within.

हिताहितं सुखं दुःखमायुस्तस्य हिताहितम्।
मानं च त यत्रो मायुर्वेदः स उच्यते॥

Meaning: Ayurveda is that science which describes what is good and bad for life, what brings happiness and sorrow, and what is beneficial or harmful for a long healthy life.

About Us

At Athuliam Ayurveda, we bring together the timeless wisdom of Ayurveda and the purity of nature to create holistic wellness solutions. The word Athuliam means incomparable and complete, reflecting our belief that true health is found in balance—of body, mind, and spirit.

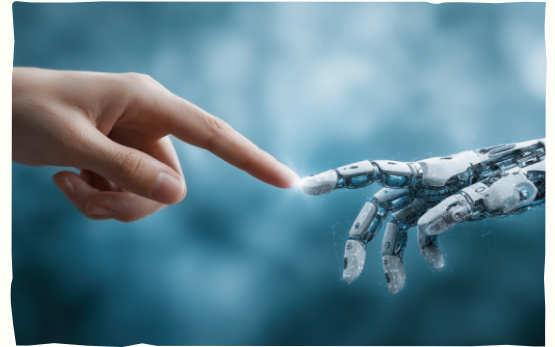
Guided by the principles of Ayurveda and enriched with modern extract-based formulations, our products are crafted to restore harmony in the Tridoshas – Vata, Pitta, and Kapha. Every formulation is thoughtfully developed using authentic herbs, botanicals, and natural extracts, ensuring purity, safety, and effectiveness.

We are committed to nurturing not just beauty and health, but complete wellness. At Athuliam Ayurveda, every product is a promise—of authenticity, sustainability, and harmony with nature.



Our Vision

To make the ancient science of Ayurveda accessible, relevant, and effective for modern lifestyles while preserving its authenticity. We envision a world where people experience natural healing and embrace wellness as a way of life—not just a remedy.



Our Mission

To craft products that combine Ayurvedic wisdom with modern extract-based formulations, ensuring purity, safety, and effectiveness. Every product is developed to bring balance to the Tridoshas – Vata, Pitta, and Kapha, restoring harmony and vitality from within.



Our Philosophy

At Athuliam Ayurveda, we believe wellness is not just the absence of illness, but the harmony of body, mind, and spirit. Rooted in the ancient wisdom of Ayurveda, our philosophy blends authenticity with innovation, ensuring that every product restores balance, nurtures vitality, and aligns with the natural rhythms of life. We honor nature, respect tradition, and embrace science to deliver care that is safe, holistic, and timeless.


What We Offer?

From wellness supplements to skin, hair, and body care, our range is designed to align with nature and bring wholeness in every drop. Each formulation is thoughtfully curated to deliver:

- Gentle, safe, and sustainable care
- Deep nourishment and healing
- Visible results without harmful chemicals

Our Promise

At Athuliam Ayurveda, we are committed to:

-  Authentic Ayurveda rooted in purity and tradition
-  Eco-conscious practices that respect nature
-  Transparency in sourcing and formulation
-  Products that bring not just beauty, but complete wellness

Why Choose Us?

Because with Athuliam Ayurveda, you don't just buy a product—you embrace a lifestyle of balance, harmony, and timeless wellness.



NEW LAUNCHES

AYURVEDIC ENERGY DRINK BLENDS



THE STRENGTH OF YOUR FOUNDATION DEFINES THE QUALITY AND LENGTH OF LIFE.



HEALTH CARE

Good health is the foundation of a balanced and fulfilling life. Proper nutrition and an active lifestyle support heart health, strong bones and muscles, and overall well-being. Both nutritional deficiencies and unhealthy eating habits can affect long-term health and quality of life.

Our Health & Wellness range is designed to bridge daily nutritional gaps with supplements that support immunity, cardiovascular health, metabolic balance, detoxification, women's health, fitness, and bone & joint strength — helping individuals move confidently towards a healthier, more vibrant life.



IMMUNITY MANAGEMENT RANGE



IN TODAY'S
FAST-PACED LIFESTYLE, CONSTANT STRESS, POLLUTION,
POOR SLEEP, AND UNHEALTHY EATING HABITS WEAKEN OUR
NATURAL DEFENSE SYSTEM. STRONG IMMUNITY IS THE
FOUNDATION OF HEALTHY LIVING, HELPING THE BODY FIGHT I
NFECTIONS, RECOVER FASTER, AND MAINTAIN OVERALL
VITALITY. EFFECTIVE IMMUNITY MANAGEMENT SUPPORTS
LONG-TERM
WELLNESS, ENHANCES ENERGY LEVELS, AND PROTECTS
AGAINST SEASONAL AND LIFESTYLE-RELATED HEALTH
CHALLENGES, MAKING IT ESSENTIAL FOR A BALANCED AND
HEALTHY LIFE TODAY.

BEAU & BELLE ORGANIC SPIRULLINA CAPSULES[^]

Spirulina is a natural algae powder rich in protein, antioxidants, and essential vitamins and minerals. It contains high natural iron and is considered one of the best natural protein sources. Spirulina supports immunity, aids digestion, and helps the body's natural cleansing and detoxification process.

Key Benefits : Spirulina Capsules help boost immunity, increase energy, support detoxification, and improve overall nutritional balance.

EACH CAPSULE CONTAINS: SPIRULLINA (SPIRULLINA PLATENSIS) PL. 500 MG

Dosage: 1 or 2 Capsules twice a day or as directed by healthcare professional.

Indication: Useful in obesity, arthritis, builds immunity against infection and is a Rasayan

Net Qty: 60 Capsules

MRP: 900/- (Incl. of all taxes)

USP /Unit: 15/- (Incl. of all taxes)



BEAU & BELLE CURCUMIN TABLETS[^]

Curcumin is a natural compound derived from turmeric, known for its powerful antioxidant and anti-inflammatory properties. It supports immunity, joint and muscle health, and overall wellness while helping protect the body from oxidative stress.

Key Benefits : Curcumin + Piper nigrum helps enhance curcumin absorption, reduce inflammation, support joint health, boost immunity, and provide powerful antioxidant protection.

EACH TABLET CONTAINS: CURCUMIN (CURCUMA LONGA)-450 MG, KALI MIRCH (PIPER NIGRUM)-50 MG

Dosage: 1 or 2 tablets twice a day or as directed by healthcare professional.

Indication: Useful in Anemia, anti-inflammatory, antioxidant, heart disease, skin disease, blood detox

Net Qty: 60 Tablets

MRP: 600/- (Incl. of all taxes)

USP /Unit: 10/- (Incl. of all taxes)



AYURVEDIC

PROPRIETARY
MEDICINE



BEAU & BELLE NEEM GILOY TULSI TABLETS^

Neem, Giloy, and Tulsi tablets combine the goodness of three powerful herbs known for their immune-supporting, Uric acid balance and detoxifying properties. This blend helps purify the body, support natural immunity, and promote overall health and balance.

Key Benefits : Helps maintain healthy uric acid levels while supporting detoxification , immunity and joint comfort.

EACH TABLET CONTAINS: NEEM CHAL-125 MG, GILOY-125 MG, TULSI-125MG

Dosage: 1 or 2 tablets twice a day or as directed by healthcare professional.
Indication: Supports Pitta balance and healthy uric acid metabolism.
Net Qty: 60 Tablets
MRP: 750/- (Incl. of all taxes)
USP /Unit: 12.5/- (Incl. of all taxes)



BEAU & BELLE ANEMIA TABLETS^

Anemia tablets are formulated to help support healthy hemoglobin levels and improve iron absorption. They aid in reducing fatigue, enhancing energy levels, and supporting overall vitality for daily well-being.

Key Benefits : Supports healthy hemoglobin levels, improves iron absorption, and helps reduce fatigue for better energy and vitality.

EACH TABLET CONTAINS: PAPAYA LF-200MG, BHUI-AMLA-100MG, PUNARNAVA-75MG, KALMEGH-75MG, SARPANKHA-50MG, ROHITKA-50MG, GILOY-50MG, KASMARD-50MG

Dosage: 1 or 2 tablets twice a day or as directed by healthcare professional.
Indication: Help support healthy hemoglobin levels, improve iron absorption, reduce fatigue.
Net Qty: 60 Tablets
MRP: 750/- (Incl. of all taxes)
USP /Unit: 12.5/- (Incl. of all taxes)



AYURVEDIC

PROPRIETARY
MEDICINE



BEAU & BELLE BLOOD PURIFIER SYRUP[^]

This is an Ayurvedic syrup that helps purify the blood, remove toxins from the body, and leave the skin clear and healthy from within. It helps reduce pimples, acne, and other skin problems, and improves overall health.

Key Benefits: Purifies the blood, leaving the skin clear and glowing, Helps reduce pimples, acne, and blemishes, Helps remove toxins from the body, Provides relief from skin problems, Provides a healthy glow from within.

Uses: Take 1-2 teaspoons of syrup with water daily or as directed by your doctor.

Net Quantity: 200 ml

MRP: 249/- (inclusive of all taxes)

Price per unit: 1.25/- (inclusive of all taxes)

BEAU & BELLE MULTI-VITAMIN TABLETS[^]

Multi-Vitamin Tablets are formulated to help bridge daily nutritional gaps and support overall health and vitality. Enriched with essential vitamins and minerals, they help boost energy levels, support immunity, and promote everyday wellness.

Key Benefits : Multivitamin tablets helps in increasing alertness and energy level in body. It also helps in increasing body metabolism and boosting memory.

EACH TABLET CONTAINS: GAMBHARI-15MG, KANTKARI-20MG, SHATAWAR-50MG, CURCUMIN-25MG, SUDH KUCHLA-25MG, ASHWAGANDHA-50MG, LOH BHASMA-15MG, ACAI BERRY-15MG, PIPPALI-15MG, GUDUCHI-20MG, HARITALI-10MG, BALA-10MG, VASA-15MG, VIDARI-15MG, PUNARNAVA-25MG, AMALAKI-15MG, GOKHRU-25MG, SEABUCHTHORN-15MG, NONI-15MG, GANDERMA-15MG, MILK THISTLE-15MG, BEL PATTAR-15MG, SHANKH BHASAM-10MG, ARJUN-10MG, RASPBERRY-10MG, GYMNEMA-10MG, LAUNG-10MG, MULETHI-10MG, KOKUM-10MG, WHEATGRASS-10 MG, MORINGA-10MG, ASHOK-10MG, SUANTH-10MG, GILOY-25MG, SHILAJEET-25MG, ALOEVERA-25MG, DENDLION-10MG, BHIRINGRAJ-10MG, KALONJISEED-10MG, BALA-15MG, MANJSTHA-10MG, NEELINI-10MG, CURRYLEAVES-15MG

Dosage: 1 to 2 tablets twice a day or as directed by the physician.

Indication: Support immunity, and maintain overall vitality by fulfilling daily nutritional needs.

Net Qty: 60 Tablets

MRP: 1200/- (Incl. of all taxes)

USP /Unit: 20/- (Incl. of all taxes)



AYURVEDIC

PROPRIETARY
MEDICINE



BEAU & BELLE

FLEXI HEEL CAPSULES

Flexi Heal Capsules is an Ayurvedic formulation that helps provide natural relief from joint and muscle pain. Enriched with herbal ingredients, it helps reduce inflammation, increase flexibility, and improve overall joint health, allowing you to live a more active and pain-free life.

Key Benefits: Naturally relieves joint and muscle pain and inflammation. Strengthens joints by increasing flexibility and facilitating movement.

Dosage: Take 1 capsule daily half an hour before meals, or as directed by the physician.

Uses: Helps strengthen bones and teeth, supports healthy iron levels, and reduces weakness and fatigue.

Net Quantity: 30 capsules

MRP: 350/- (inclusive of all taxes)

BEAU & BELLE

MORINGA POWDER

Moringa powder is a powerful Ayurvedic superfood, rich in vitamins, minerals, and antioxidants. It helps boost immunity, provide energy, and improve overall health.

Key Benefits: Strengthens immunity, provides natural energy, improves digestion, supports skin and hair health, and helps detoxify the body.

Usage: Mix 1 teaspoon of Moringa powder in lukewarm water, juice, or smoothie and consume once daily, or as advised by a physician.

Net Quantity: 100 g

MRP: 599/- (inclusive of all taxes)



AYURVEDIC

PROPRIETARY
MEDICINE



BEAU & BELLE FLAX SEED CAPSULES^

Flax Seed Capsules are enriched with natural flaxseed extract, a rich source of omega-3 fatty acids, fiber, and antioxidants. They support heart health, digestion, and overall wellness naturally.

Key Benefits : Helps to strengthen immunity, support healthy skin and hair, and aid in maintaining balanced blood sugar levels. They also support joint health in conditions like arthritis, improve digestion, and promote overall wellness.

EACH CAPSULE CONTAINS:

Dosage:	1 to 2 capsules once a day, half an hour after meals or as directed by the physician.
Indication:	For digestive discomfort, cholesterol management, heart health support, hormonal balance.
Net Qty:	60 Softgel Capsules
MRP:	549/- (Incl. of all taxes)
USP /Unit:	9.15/- (Incl. of all taxes)

BEAU & BELLE GANODERMA PROTEIN POWDER^

Ganoderma Protein Powder is a nutrient-rich formulation combining high-quality protein with Ganoderma extract to support immunity, strength, and overall vitality. It helps nourish the body, improve stamina, and promote daily wellness.

Key Benefits : Supports immunity and energy levels, helps build and maintain muscle strength, improves stamina, and promotes overall health and vitality.

EACH 5G CONTAINS: KHEERA-250MG, KHARBUJA-250MG, LAUKI-250MG, TINDA-250MG, BADAM-1.55G, GULAB KE PHOOL-0.125G, KALIMIRCH-0.075G, JIRAK SVET-0.25G, CHOTI ELAICHI-0.75G, GANODERMA-0.75G

Dosage:	1-2 teaspoonful with milk/juice/yogurt , twice a day or as directed by the physician.
Indication:	For general weakness, low energy, nutritional deficiency, immunity support, muscle recovery
Net Qty:	400gms
MRP:	1990/- (Incl. of all taxes)
USP /Unit:	4.98/- (Incl. of all taxes)





**BEAU & BELLE
PANCH TULSI DROPS^**

Panch Tulsi Drops are a blend of five varieties of Tulsi, formulated to support immunity and respiratory health. They help strengthen the body's natural defenses, promote wellness, and maintain overall vitality.

Key Benefits : Panch Tulsi Drops support respiratory health, boost natural immunity, help relieve cough and cold, reduce throat irritation, and promote overall wellness.

EACH 10ML CONTAINS: ARJAK TULSI-1.5ML, TULSI-2.5ML, RAMATULSI-1.0ML, VAN TULSI-2.0ML, NIMBU TULSI-1.0ML

Dosage: Take 4-5 drops with a cup of water/tea , thrice a day before or after food or as directed by the physician.
 Net Qty: 30 ml
 MRP: 238/- (Incl. of all taxes)
 USP /Unit: 7.9/- (Incl. of all taxes)

**ABEAU & BELLE
CMD DROPS^**

CMD Drops are formulated with Ayurvedic ingredients to support healthy digestion and metabolism. They help improve appetite, aid nutrient absorption, and promote overall digestive wellness.

Key Benefits : CMD Drops help replenish essential minerals, support bone and muscle health, enhance energy levels, improve hydration, and promote overall wellness.

EACH 10ML CONTAINS: 100% NATURALLY RESOURCES CONCENTRATED MINERALS

Dosage: Take 5-10 drops with a cup of water , twice a day before or after food or as directed by the physician.
 Net Qty: 30 ml
 MRP: 350/- (Incl. of all taxes)
 USP /Unit: 11.66/- (Incl. of all taxes)



AYURVEDIC

PROPRIETARY
MEDICINE



BEAU & BELLE WINZIN MULTI-VITAMIN SYRUP[^]

Winzin Multi-Vitamin Syrup is a nutritious supplement enriched with essential vitamins and minerals. It helps boost immunity, support growth and development, enhance energy levels, and promote overall health and vitality.

Key Benefits: Winzin syrup is enriched with nutrition supplements. it is formulated with unique blends of herbs, essential vitamins and minerals. it is very useful in general weakness & fatigue, after long illness, in chronic & acute diseases, general health tonic, anemia & weight loss. it is 100% herbal and no side effect.

EACH 5ML CONTAINS: ASHWAGANDHA-50MG, AMLA-50MG, BALABEEJ-50MG, ALFA-ALFA-50MG, CARROT-50MG, WHEAT GRASS-50MG, GILOY-50MG, GOKSHURA-50MG, BRAHMI-50MG, TRIFLA-50MG

Dosage: 1 to 2 teaspoonful , twice a day before or after food or as directed by the physician.
Net Qty: 200 ml
MRP: 385/- (Incl. of all taxes)
USP /Unit: 1.925/- (Incl. of all taxes)

BEAU & BELLE MULTI-VITAMIN SYRUP[^]

Multi-Vitamin Syrup is enriched with essential vitamins and minerals to support overall health. It helps boost immunity, increase energy, aid growth and development, and promote daily wellness.

Key Benefits : Beneficial in treating malnutrition, vitamin deficiencies, anemia, general weakness and fatigue, while also enhancing immune function and promoting overall wellbeing.

EACH 10ML CONTAINS: MUNAKKA-100MG, SHATAVARI-100MG, BEETROOT-100MG, GHRITKUMARI-50MG, ASHWAGANDHA-50MG, AMLA-50MG, SAHJAN-25MG, SHILAJIT-25MG, MULETHI-25MG, SAFED-MUSLI-25MG, PAPAYA-25MG, BHRINGRAJ-25MG, ARJUN-25MG, BRAHMI-25MG, ASHTAVARGA-25MG, BELGIRI-15MG, PUNARNAVA-15MG, HALDI-15MG, ANJIR-15MG, GILOY-10MG, NAGARMOHA-10MG, SAUNF-10 MG, GOKHRU- 10

Dosage: 5 to 10ml twice a day, after meals or as directed by the physician.
Net Qty: 200 ml
MRP: 279/- (Incl. of all taxes)
USP /Unit: 1.24/- (Incl. of all taxes)



AYURVEDIC

PROPRIETARY
MEDICINE



BEAU & BELLE ALOE ASHWA JUICE^

Aloe Ashwa Juice combines the goodness of Aloe Vera and Ashwagandha to support overall wellness. It helps boost immunity, improve digestion, enhance vitality, and promote natural rejuvenation.

Key Benefits : Aloe Ashwa Juice supports healthy digestion and helps manage stress naturally. It boosts immunity, improves energy levels, and promotes overall wellness and vitality.

EACH PACK CONTAINS: ALOEVERA-90%, NONI-0.25%, ASHWAGANDHA-0.25%, SEABUCKTHORN-0.10%

Dosage: 15-30ml twice a day with glass of lukewarm water , before food or as directed by the physician.

Net Qty: 500ml

MRP: 850/- (Incl. of all taxes)

USP /Unit: 1.70/- (Incl. of all taxes)

BEAU & BELLE AMRIT BOOST JUICE^

Amrit Boost Juice is a natural herbal formulation designed to enhance energy and vitality. It helps strengthen immunity, support overall wellness, and promote a balanced and active lifestyle.

Key Benefits : Amrit Boost Juice helps strengthen immunity and boost natural energy levels. It supports overall vitality, improves stamina, and promotes daily wellness.

EACH 10ML CONTAINS: DRAGON FRUIT-50MG, ELDERBERRY EXT-25MG, MORINGA-25MG, NONI-25MG, GOJIBERRY-25MG, MANGOSTEEN EXT-25MG, CURCUMIN EXT-25MG, ACAI BERRY-25MG, CINAMON-25MG, MULBERRY-15MG, SHILAJIT-30MG, GRAPESEED-25MG, WHEATGRASS-30MG, ASHWAGANDHA-15MG, BEETROOT-25MG, POMEGRANATE-20MG, ARJUNA-0.05MG, KALMEGH-0.05MG, GOKHRU-0.05MG, DATES-0.05MG, BERBERRY-0.05MG, GOOSE BERRY-0.05MG, HING-0.05MG, CRANBERRY-0.05MG, LODHRA-0.05MG, RASNA-0.05MG, STRAWBERRY-0.05MG, ELDERBERRY-0.05MG, BLACK CURRENT-0.05MG, BLACKBERRY-0.05, BLUEBERRY-0.05MG, KACHNAR-0.05MG, KALMEGH-0.05MG, RASPBERRY-0.05MG, SEABUCKTHORN-50MG, AJWAIN-10MG, SAUNTH-10MG, PIPPAL-10MG, KALIMIRCH-10MG, RASPBERRY-20MG, ASHOKA-20MG, BASIL-20MG

Dosage: 15-30ml twice a day with glass of lukewarm water , before food or as directed by the physician.

Net Qty: 500ml

MRP: 1500/- (Incl. of all taxes)

USP /Unit: 3/- (Incl. of all taxes)



**BEAU & BELLE
GREEN TEA TABLETS[^]**

Green Tea Tablets are enriched with natural green tea extracts to support metabolism and overall wellness. They help boost energy, aid digestion, and promote detoxification and antioxidant protection.

EACH TABLET CONTAINS: GREEN TEA-300MG, GRAPE SEED-100MG, AMALVETAS/SEABUCKTHORN-100MG, DALCHINI-25MG, TULSI-25MG, LEMON-25MG, GINGER-25MG, BLACK PEPPER-25MG

Dosage: In a 100ml cup of hot water, add 1 tablet, gently stir with spoon. Tea is ready.
Net Qty: 60 Tablets
MRP: 449/- (Incl. of all taxes)
USP /Unit: 7.48/- (Incl. of all taxes)

Boosts Energy Naturally

Enhances Overall Wellness

Supports Healthy Metabolism

Provides Antioxidant Protection

Aids Digestion Effectively

Promotes Body Detox





**BEAU & BELLE
VITAMIN -C EFFERVESCENT TABLETS^**

Vitamin C Effervescent Tablets provide a convenient source of vitamin C to support immunity and overall wellness. They help protect against oxidative stress, boost energy, and promote daily health and vitality.

Key Benefits : These tablets help boost immunity, fight free radicals, support collagen formation, improve skin health, reduce fatigue, and promote overall vitality.

EACH 4G TABLET CONTAINS: AMLA-500MG, ORANGE-250MG

Dosage: Take 1 tablet with a glass of water , once a day before or after food or as directed by the physician.
Net Qty: 15 Tablets
MRP: 349/- (Incl. of all taxes)
USP /Unit: 23.26/- (Incl. of all taxes)

Boosts Immunity Fast

Enhances Collagen Formation

Fights Free Radicals



Supports Skin Health

Promotes Overall Wellness

Reduces Fatigue Quickly

AYURVEDIC

**PROPRIETARY
MEDICINE**

**BEAU & BELLE
SHILAJIT RESIN[^]**



Shilajit Resin is a natural, mineral-rich resin sourced from high-altitude Himalayan mountains, renowned for its rejuvenating and revitalizing properties. It contains high levels of fulvic acid, a powerful antioxidant that aids nutrient absorption, detoxification, and cellular regeneration. Rich in over 80 essential minerals, including iron, magnesium, potassium, and zinc, Shilajit helps boost energy, enhance stamina, support immunity, and promote overall vitality and wellness. Its natural compounds work synergistically to combat fatigue, support brain function, improve metabolism, and maintain healthy aging.

EACH PACK CONTAINS: 100% SHILAJIT RESIN (PURIFIED)

Dosage: Pearl sized drop in 300ml warm milk/water , before breakfast daily or as directed by the physician.
Net Qty: 20 g
MRP: 1490/- (Incl. of all taxes)
USP /Unit: 74.50/- (Incl. of all taxes)

Boosts Energy Naturally

Enhances Cognitive Function

Reduces Fatigue Quickly

Improves Heart Health

Supports Immunity Strength

Enhances Libido Naturally

Promotes Anti-Aging

Strengthens Bones Effectively

Detoxifies Body Gently

Supports Nutrient Absorption





DIGESTION MANAGEMENT RANGE

IRREGULAR EATING HABITS, STRESS, AND POOR FOOD CHOICES OFTEN DISTURB DIGESTIVE HEALTH. A STRONG DIGESTIVE SYSTEM IS THE FOUNDATION OF OVERALL WELLNESS, ENSURING PROPER NUTRIENT ABSORPTION, IMPROVED METABOLISM, AND BETTER IMMUNITY. EFFECTIVE DIGESTION MANAGEMENT HELPS REDUCE BLOATING, ACIDITY, AND DISCOMFORT, SUPPORTS GUT BALANCE, AND PROMOTES SUSTAINED ENERGY AND LONG-TERM HEALTHY LIVING.

AYURVEDIC

PROPRIETARY
MEDICINE



BEAU & BELLE 4G DIGESTIVE TABLETS[^]

4G Digestive Tablets are formulated with Ayurvedic ingredients to support healthy digestion and gut comfort. They help improve appetite, reduce bloating, and promote better nutrient absorption for daily digestive wellness.

Key Benefits: Supports healthy digestion, improves appetite, and helps reduce bloating and acidity.

EACH CAPSULE CONTAINS: SANAI-75MG, AWALA-100MG, AJWAIN-50MG, JEERA-50MG, KALIMIRCH-50MG, SAUNTH-75MG, KASNI-75MG, HARAR-75MG, DARU HALDI-25MG, SHARPANKHA-50MG, LAUNG-75MG, KUTKI-50MG,

Dosage: 1 to 2 tablets twice a day with fresh water or as directed by the physician.
Indication: Helps balance Agni (digestive fire) and supports overall digestive wellness
Net Qty: 60 Tablets
MRP: 750/- (Incl. of all taxes)
USP /Unit: 12.5/- (Incl. of all taxes)

BEAU & BELLE FIBER TABLETS[^]

Fiber Tablets are formulated to support healthy digestion and regular bowel movement. They help improve gut health, support detoxification, and promote overall digestive balance as part of a healthy lifestyle.

Key Benefits : Supports regular bowel movement, improves digestion, aids weight loss and promotes gut health.

EACH CAPSULE CONTAINS: OATS, DILUTENT, CORN STARCH, STEARIC ACID, PEA FIBRE, STARCH, DEXTROSE

Dosage: 1 tablet thrice a day ,after meal or as directed by the physician.
Indication: Helps regulate Apana Vata and supports healthy elimination
Net Qty: 60 Tablets
MRP: 950/- (Incl. of all taxes)
USP /Unit: 15.83/- (Incl. of all taxes)



AYURVEDIC

PROPRIETARY
MEDICINE



BEAU & BELLE ULCER TABLETS[^]

Ulcer Tablets are formulated with Ayurvedic ingredients to support digestive comfort and maintain stomach health. They help soothe irritation, protect the digestive lining, and promote overall gut wellness.

Key Benefits : Ulcer care tablets helps in relieving irritation, suppress heartburn, reduces acid secretion, protect mucosa.

EACH CAPSULE CONTAINS: NISOTH-150MG, MULETHI-100MG, PUDINA-85MG, AMLA-70MG, METHI-70MG, GARLIC-100MG, AJWAIN-50MG, DALCHINI-25MG, HING-25MG, SAUNTH-25MG, PIPPAL-25MG, KALI-25 MG

Dosage: 1 to 2 Tablets twice a day or as directed by the physician.
Indication: Helps balance Pitta dosha and supports healthy digestive fire.
Net Qty: 60 Tablets
MRP: 650/- (Incl. of all taxes)
USP /Unit: 10.83/- (Incl. of all taxes)

BEAU & BELLE PILES CARE TABLETS[^]

Piles Care Tablets are formulated with Ayurvedic herbs to support digestive and rectal health. They help reduce discomfort, promote healthy bowel movements, and maintain overall digestive wellness.

Key Benefits : Helps relieve discomfort from piles, supports healthy bowel movements, and promotes digestive wellness.

EACH TABLET CONTAINS: HARAR-100MG, AMLA-100MG, BAHERA-100MG, NISOTH-75MG, HARIDRA-75MG, NAGKESAR-75MG, SANKH-75MG, KATTHA-50MG, INDERJOW-50MG, MANJEETH-50 MG

Dosage: 1 to 2 Tablets twice a day with lukewarm water or as directed by the physician.
Indication: Helpful in piles, fissure, fistula, hemorrhoids
Net Qty: 60 Tablets
MRP: 750/- (Incl. of all taxes)
USP /Unit: 12.50/- (Incl. of all taxes)



AYURVEDIC

PROPRIETARY
MEDICINE



BEAU & BELLE LAXATIVE RELIEF CONSTIPATION POWDER^

Laxative Relief Constipation Powder is formulated with Ayurvedic herbs to support healthy bowel movements. It helps relieve constipation, improve digestive comfort, and promote overall gut wellness.

Key Benefits : Laxative Relief Constipation Powder helps promote regular bowel movements and relieves constipation naturally. It supports digestive health, reduces bloating, and improves gut comfort.

EACH 100G CONTAINS: SAUNFF-6G, BADI ELAICHI-6G, SHUDH HEENG-1G, JEERA-3G, DHANIYA-3G, NISHOD-3G, SANAY-24G, JANGIHARAD-6G, NAR KACHOOR-3G, AJMOD-3G, PIPPALI-3G, SENDHA NAMAK-6G, SAUNTH-6G, TRIFLA-16G, KALI MIRCH-3G, NAUSADAR-3G, NIMBU SATVA-3G, KALA NAMAK-2G

Dosage: Take 1 to 2 tablespoonful with a glass of lukewarm water, after food or as directed by the physician.
Net Qty: 100gm
MRP: 168/- (Incl. of all taxes)
USP /Unit: 1.68 /- (Incl. of all taxes)



DIABETES MANAGEMENT RANGE



IN TODAY'S MODERN LIFESTYLE, UNHEALTHY EATING HABITS, STRESS, AND LACK OF PHYSICAL ACTIVITY HAVE MADE DIABETES A COMMON HEALTH CONCERN. EFFECTIVE DIABETES MANAGEMENT IS ESSENTIAL TO MAINTAIN BALANCED BLOOD SUGAR LEVELS, SUPPORT METABOLISM, AND PREVENT LONG-TERM COMPLICATIONS. A HOLISTIC DIABETES MANAGEMENT RANGE HELPS IMPROVE INSULIN SENSITIVITY, BOOST ENERGY, AND PROMOTE OVERALL WELLNESS, SUPPORTING A HEALTHIER AND MORE BALANCED LIFE.

AYURVEDIC

PROPRIETARY
MEDICINE

BEAU & BELLE
AYUSH- 82 TABLETS^



AYUSH-82 Tablets are an Ayurvedic formulation developed to support immune health, healthy blood sugar management, and overall wellness. Carefully selected herbs help strengthen the body's natural defense system, support healthy digestion, maintain balanced blood sugar levels, improve vitality, and promote overall well-being.

Key Benefits : AYUSH-82 Tablets help support immune health, strengthen the body's natural resistance, support healthy blood sugar management (anti-diabetic support), improve digestion, and enhance overall wellness.



EACH TABLET CONTAINS: AMRA-104MG, KARELA-104MG, GUDMAR-104MG, JAMUN-104MG, SHUDH SHILAJIT-0.01665G

- Dosage: 2 tablets three times a day, half an hour before meals or as directed by the physician.
- Indication: Supports immunity and overall health by balancing the body's doshas.
- Net Qty: 60 Tablets
- MRP: 490/- (Incl. of all taxes)
- USP /Unit: 8.17/- (Incl. of all taxes)

“AYUSH-82 is an Ayurvedic anti-diabetic formulation developed by the Central Council for Research in Ayurvedic Sciences (CCRAS), an apex body under the Ministry of AYUSH, Government of India. It is scientifically researched and clinically tested to help prevent and manage Type-2 diabetes and maintain normal blood glucose levels.”

AYURVEDIC

PROPRIETARY
MEDICINE



BEAU & BELLE ANTI- DIABETIC CAPSULES^

Anti-Diabetic Capsules are formulated with Ayurvedic herbs to help support healthy blood sugar balance and metabolic health. They aid in improving insulin function and overall well-being when used alongside a balanced diet and lifestyle.

Key Benefits : Helps maintain healthy blood sugar levels and supports metabolic balance.

EACH CAPSULE CONTAINS: CHIRAITA-75MG, MAMEJA-75MG, GURMAR-75MG, KARELA-75MG, NEEM-50MG, VIJAYSAR-50MG, ASHWAGANDHA-25MG, KUTAJ-15MG, CHAVYA-15MG, CHITRAK-15MG, DALCHINI-10MG, ROSE PETAL-10MG, KUTKI-10MG

Dosage: 1 to 2 Capsules twice a day ,before meal or as directed by the physician.
Indication: Blood Sugar Management
Net Qty: 60 Capsules
MRP: 700/- (Incl. of all taxes)
USP /Unit: 11.66/- (Incl. of all taxes)

BEAU & BELLE DYBO WELL RAS^

Dybo Well Ras is an Ayurvedic formulation designed to support healthy blood sugar levels. It helps maintain glucose balance, improves metabolic health, and promotes overall wellness for individuals managing diabetes.

Key Benefits : Dybo Well Ras helps support healthy blood sugar balance and improves metabolism naturally. It enhances energy levels, supports pancreatic function, and promotes overall wellness.

EACH 10ML CONTAINS: ALOEVERA JUICE-1ML, NEEM-200MG, KARELA-250MG, JAMUN-350MG, GILOY-200MG, AMLA-350MG, HARAD-200MG, BAHEDA-200MG, DANA METHI-100MG, ASHWAGANDHA-100MG, GUDMAR-150MG, VIJAYSAR-50MG, SHILAJIT-50MG

Dosage: 15-30ml twice a day with glass of lukewarm water , before food or as directed by the physician.
Net Qty: 500ml
MRP: 690/- (Incl. of all taxes)
USP /Unit: 1.38/- (Incl. of all taxes)



ORTHO MANAGEMENT RANGE



**POOR POSTURE,
LACK OF PHYSICAL ACTIVITY, AGING, AND DAILY
STRAIN OFTEN LEAD TO JOINT AND MUSCLE
DISCOMFORT. EFFECTIVE ORTHO MANAGEMENT IS
ESSENTIAL TO SUPPORT JOINT FLEXIBILITY, REDUCE
STIFFNESS, AND MAINTAIN MOBILITY. A HOLISTIC
ORTHO MANAGEMENT RANGE HELPS STRENGTHEN
BONES AND MUSCLES, EASE PAIN NATURALLY, AND
PROMOTE LONG-TERM COMFORT AND ACTIVE
LIVING.**



BEAU & BELLE BONE HEALTH TABLETS[^]

Bone Health Tablets are formulated with essential Ayurvedic herbs and minerals to support strong bones and joints. They help maintain bone density, promote skeletal strength, and enhance overall mobility and vitality.

Key Benefits : For bone health, calcium deficiency, joint pain & muscle cramps

EACH CAPSULE CONTAINS: SHALLAKI-200MG, HADJOD-50MG, KUKTANDTAVAK BHASAM-50MG, GODANTI BHASAM-50MG, RASNA-50MG, SHUDH KUCHLA-30MG, ALSILINUM-25MG, MUKTASHUKTI BHASAM-10MG, BACHHANG- 10MG

Dosage: 1 to 2 Tablets twice a day or as directed by the physician.
 Indication: Helps nourish Asthi Dhatu and balance Vata dosha.
 Net Qty: 60 Tablets
 MRP: 750/- (Incl. of all taxes)
 USP /Unit: 12.50/- (Incl. of all taxes)

BEAU & BELLE JOINT HEAL TABLETS[^]

Joint Heal Tablets are formulated with Ayurvedic herbs to support healthy joints and mobility. They help reduce stiffness, promote flexibility, and maintain overall joint comfort for an active lifestyle.

Key Benefits : Helps reduce joint stiffness, supports flexibility, and improves overall joint mobility.

EACH CAPSULE CONTAINS: NIRGUNDI-50MG, RUMI MASTANGI-50MG, SALAI GUGGAL-50MG, ASHWAGANDHA-100MG, SAUNTH-30MG, USVA-50MG, TRIVANG BHASAM-50MG, GODANTI BHASAM-50MG, LOHBAN-20MG, AMLA-30MG, RAMYAPHAL-30MG, NAG BHASAM-50MG, SWAMA BHASAM-0.5MG, KARPUR KESAR-0.5MG, AMBER-1MG, MOTI PISHTI-1 MG, RIGNI KALONJI-4 MG, MIRCH KALI-30MG, PAPAL-30MG, RASNA-32MG, SURANJAN-35MG, CHOBCHINI-35MG

Dosage: 1 to 2 Tablets twice a day with water/milk or as directed by the physician.
 Indication: Helps nourish Asthi Dhatu and balance Vata dosha.
 Net Qty: 60 Tablets
 MRP: 899/- (Incl. of all taxes)
 USP /Unit: 14.98/- (Incl. of all taxes)





**BEAU & BELLE
VATA PAIN SUTRA POWDER^**

Vata Pain Sutra Powder is formulated with Ayurvedic herbs to help relieve joint and muscle discomfort. It supports flexibility, reduces stiffness, and promotes overall musculoskeletal wellness.

Key Benefits : Vata Pain Sutra Powder helps relieve joint, muscle, and body pain associated with Vata imbalance. It supports flexibility, reduces stiffness, and promotes overall mobility and comfort.

EACH 100G CONTAINS: SALAI GUGGAL-100MG, INDERJAO-50MG, ASHWAGANDHA-50MG, RASNAPAN-100MG, SAUNTH-250MG, SUDH KUCHLA-100MG, NIRGUNDI-500MG, ABHRAK BHASM-100MG, MUKTA SHUKTI BHASAM-250MG, CHOBCHINI-500MG, DEV DARU-500MG, MORINGA-500MG, GOKHRU-500MG, HALDI-500MG, NAGARMOTHA ROOTS-500MG

Dosage: Take 3-5gms of powder with a glass of water, twice a day before or after food or as directed by the physician.

Net Qty: 90 gm

MRP: 1000/- (Incl. of all taxes)

USP /Unit: 11.11/- (Incl. of all taxes)

**BEAU & BELLE
ANTI PAIN OIL^**

Anti Pain Oil is a herbal formulation designed to provide fast and effective relief from muscle, joint, and body pain. Its natural ingredients help improve circulation and relax sore muscles.

Key Benefits : Helps relieve joint and muscle pain, reduces stiffness and inflammation, improves mobility, and provides soothing comfort.

EACH 10ML CONTAINS: NILGIRI OIL-5%V/V, SUDH KUCHLA-25MG, ASHWAGANDHA-50 MG, KAPOOR-20MG, AJWAIN SATVA-10MG, LAVANG OIL-10MG, TIL OIL-BASE

Dosage: Apply Anti Pain Oil on affected areas and massage gently till absorbed in the skin or as directed by the physician.

Indication: For joint pain, muscle soreness, backache, arthritis, sprains, and body stiffness.

Net Qty: 50 ml

MRP: 500/- (Incl. of all taxes)

USP /Unit: 10/- (Incl. of all taxes)



AVAILABLE IN DROPER & ROLL-ON PACKING

**BEAU & BELLE
PAIN BALM^**

Pain Balm is a fast-acting herbal formulation that provides effective relief from muscle, joint, and body pain. It helps soothe inflammation, improve circulation, and relax stiff muscles.

Key Benefits : Useful in headache, cold, sinus, back , neck and shoulder pains, sciatica, relieves muscle strain, effective in joint pain, stiffness, inflammation, dislocation and slip disk, spondylitis and other body pains.

EACH 100G CONTAINS: PUDINAH-20ML, GANDHPURAA OIL-10ML, AJWAIN-0.1G, CAMPHOR-0.1G, LAUNG-0.09ML, DALCHINI-0.09ML, JAIPHAL-0.1ML, KESAR-0.02ML, NILAGIRI-0.1G,

Dosage: Apply directly on skin and massage or as directed by the physician.

Net Qty: 25 g

MRP: 149/- (Incl. of all taxes)

USP /Unit: 5.96/- (Incl. of all taxes)



HEART HEALTH MANAGEMENT RANGE

STRESSFUL LIFESTYLE, UNHEALTHY DIETS, LACK OF EXERCISE, AND RISING STRESS LEVELS HAVE MADE HEART HEALTH A MAJOR CONCERN. EFFECTIVE HEART HEALTH MANAGEMENT IS ESSENTIAL TO SUPPORT PROPER CIRCULATION, MAINTAIN HEALTHY CHOLESTEROL LEVELS, AND STRENGTHEN CARDIAC FUNCTION. A HOLISTIC HEART HEALTH MANAGEMENT RANGE HELPS PROTECT THE HEART, IMPROVE ENDURANCE, AND PROMOTE LONG-TERM CARDIOVASCULAR WELLNESS FOR A HEALTHIER LIFE.





BEAU & BELLE CHOLESTEROL TABLETS[^]

Cholesterol Tablets are formulated with Ayurvedic ingredients to help maintain healthy cholesterol levels. They support heart health, improve lipid balance, and promote overall cardiovascular wellness.

Key Benefits : Helps maintain healthy cholesterol levels and supports heart health.

EACH CAPSULE CONTAINS: ARJUN-350MG, VACHA-75MG, ASHWAGANDHA-100, JATAMASI-30MG, SONTH-25MG, PIPPALI-25MG

Dosage: 1 to 2 Tablets twice a day or as directed by the physician.
 Indication: Helps balance Kapha dosha, maintain healthy cholesterol levels and supports heart health.
 Net Qty: 60 Tablets
 MRP: 650/- (Incl. of all taxes)
 USP /Unit: 10.83/- (Incl. of all taxes)

BEAU & BELLE HEART CARE CAPSULES[^]

Heart Care Capsules are formulated with Ayurvedic herbs to support cardiovascular health. They help maintain healthy blood circulation, strengthen the heart, and promote overall cardiac wellness.

Key Benefits: Supports healthy heart function, improves circulation, and promotes cardiovascular wellness.

EACH CAPSULE CONTAINS: ARJUN-350MG, VACHA-40MG, SARPAGANDHA-40MG, JATAMASI-25MG, KHURSANI-25MG, SONTH-10MG, PIPPALI-10MG

Dosage: 1 to 2 capsules twice a day with lukewarm water or as directed by the physician.
 Indication: Heart care, Hypertension, cholesterol.
 Net Qty: 60 Capsules
 MRP: 700/- (Incl. of all taxes)
 USP /Unit: 11.66/- (Incl. of all taxes)





BEAU & BELLE BP CARE CAPSULES^

BP Care Capsules are formulated with Ayurvedic herbs to support healthy blood pressure levels. They help maintain cardiovascular balance, improve circulation, and promote overall heart wellness.

Key Benefits : BP Care capsules slows down heart rate and helps the heart beat with less force. This lowers blood pressure and helps in reducing risk of having a stroke, heart attack, other heart problem, or kidney problems in the future.

EACH CAPSULE CONTAINS: BRAHMI-350MG, VACHA-50MG, ASHWAGANDHA-50MG, JATAMASI-25MG, KHURSANI AJWAIN-25MG, SONTH-15MG, PIPALI-15MG

- Dosage: 1 to 2 capsules twice a day with lukewarm water or as directed by the physician.
 Indication: Helps balance Vata and Pitta doshas and support healthy circulation.
 Net Qty: 60 Capsules
 MRP: 700/- (Incl. of all taxes)
 USP /Unit: 11.66/- (Incl. of all taxes)

BEAU & BELLE HEART WELL RAS^

Heart Well Ras is an Ayurvedic herbal tonic formulated to support cardiovascular health. It helps maintain healthy heart function, improve circulation, and promote overall cardiac wellness.

Key Benefits : Heart Well Ras supports healthy heart function and helps maintain balanced cholesterol levels. It improves blood circulation, supports cardiovascular strength, and promotes overall heart wellness.

EACH 15ML CONTAINS: GARLIC JUICE-2.5ML, GINGER JUICE-2.5ML, LEMON JUICE-2.5ML, APPLE CIDER-2.5ML, HONEY-7.5ML

- Dosage: 15-30ml twice a day with glass of lukewarm water , before food or as directed by the physician.
 Net Qty: 500ml
 MRP: 890/- (Incl. of all taxes)
 USP /Unit: 1.78/- (Incl. of all taxes)



AYURVEDIC

PROPRIETARY
MEDICINE



BEAU & BELLE SEABUCKTHORN JUICE*

Sea buckthorn juice is a powerful Ayurvedic health drink rich in vitamin C, omega fatty acids, and antioxidants. It nourishes skin and hair from within, enhances radiance, helps reduce the effects of aging, and supports heart health.

Key Benefits: Improves skin and provides a natural glow, strengthens hair and reduces hair fall, anti-aging properties help reduce wrinkles and fine lines, supports heart health and helps balance cholesterol, rich in antioxidants, repairs the body from within.

Dosage/How to Use: 15-30 ml twice a day or as directed by the physician

Net Quantity: 500 ml

MRP: 1599/- (inclusive of all taxes)

Price per unit: 2.998/- (inclusive of all taxes)

MENTAL HEALTH MANAGEMENT RANGE



**DEMANDING LIFESTYLE,
CONSTANT STRESS, ANXIETY, AND MENTAL
FATIGUE HAVE BECOME COMMON CHALLENGES.
EFFECTIVE MENTAL HEALTH MANAGEMENT IS
ESSENTIAL TO SUPPORT EMOTIONAL BALANCE,
IMPROVE FOCUS, AND ENHANCE OVERALL WELL-
BEING. A HOLISTIC MENTAL HEALTH MANAGEMENT
RANGE HELPS CALM THE MIND, REDUCE STRESS,
SUPPORT QUALITY SLEEP, AND PROMOTE MENTAL
CLARITY FOR A HEALTHIER AND MORE
BALANCED LIFE.**

AYURVEDIC

PROPRIETARY
MEDICINE



BEAU & BELLE MIGRAINE TABLETS[^]

Migraine Tablets are formulated with Ayurvedic herbs to help reduce the frequency and intensity of headaches. They support a calm nervous system, improve mental clarity, and promote overall brain and wellness health.

Key Benefits : Migraine Tablets helps in reducing chances of migraine attacks, relieves migraine pain and headaches, reduces stress, anxiety.

EACH TABLET CONTAINS: ASHWAGANDHA-150MG, BRAHMI-100MG, DASHMOOL-100MG, LOH BHASAM-25MG, GODANTI BHASAM-25MG, GOKHRU-50MG, VIDANG25-MG, AMLA-50MG, BAHEDA-50MG, HARAD-50MG, MULETHI-50, CHITRAKA-50MG

Dosage: 1 to 2 tablets twice a day with lukewarm water or as directed by the physician.
Indication: Helps reduce the frequency and intensity of headaches and supports mental comfort..
Net Qty: 60 Tablets
MRP: 650/- (Incl. of all taxes)
USP /Unit: 10.83/- (Incl. of all taxes)

BEAU & BELLE NEURO BOOST TABLETS[^]

Neuro Boost Tablets are formulated with Ayurvedic herbs to support nervous system health. They help improve focus, mental alertness, and overall neurological wellness.

Key Benefits : Supports nervous system health, improves focus, and enhances mental alertness.

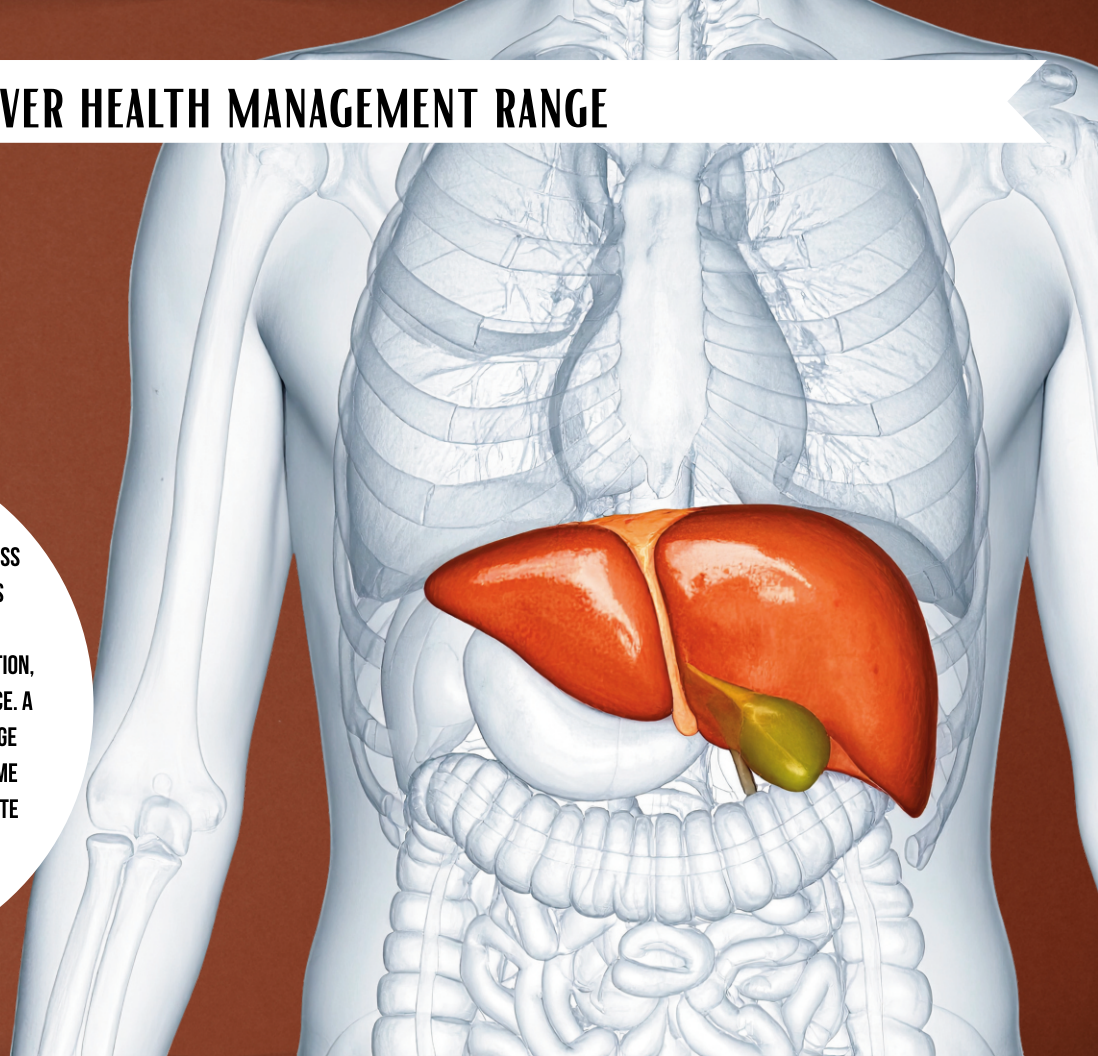
EACH TABLET CONTAINS: BRAHMI-100MG, SHANKHPUSHPI-100MG, JATAMASI-50MG, NAGARMOHA-50MG, ASHWAGANDHA-75MG, TAGAR-25MG, VACHA-25MG, GILOY-25MG

Dosage: 1 to 2 tablets twice a day with lukewarm water or as directed by the physician.
Indication: Nervine tonic, stress, insomnia, lack of concentration
Net Qty: 60 Tablets
MRP: 650/- (Incl. of all taxes)
USP /Unit: 10.83/- (Incl. of all taxes)



LIVER HEALTH MANAGEMENT RANGE

EXPOSURE TO POLLUTION, UNHEALTHY DIETS, MEDICATIONS, AND STRESS CAN OVERLOAD THE LIVER AND AFFECT ITS FUNCTION. EFFECTIVE LIVER HEALTH MANAGEMENT IS ESSENTIAL FOR DETOXIFICATION, HEALTHY DIGESTION, AND METABOLIC BALANCE. A HOLISTIC LIVER HEALTH MANAGEMENT RANGE HELPS CLEANSE THE LIVER, SUPPORT ENZYME BALANCE, IMPROVE DIGESTION, AND PROMOTE OVERALL VITALITY FOR LONG-TERM WELLNESS.



AYURVEDIC

PROPRIETARY
MEDICINE



BEAU & BELLE JAUNLIVE LIVER SYRUP[^]

JaunLive Liver Syrup is formulated with Ayurvedic herbs to support healthy liver function. It helps detoxify the body, improve digestion, and promote overall liver wellness and vitality.

Key Benefits : Beneficial in liver diseases and controls cholesterol

EACH 5ML CONTAINS: KATUKI-150MG, KALMEGH-100MG, BHMI AMLA-200MG, MAKOY-100MG, PUNARNAVA-100MG, KASNI-100MG, SHARPUNKHA-100MG, BHARINGRAJ-100MG, NEEM-50MG,

Dosage: 1 to 2 teaspoonful, twice a day before or after food or as directed by the physician.
Net Qty: 200 ml
MRP: 385/- (Incl. of all taxes)
USP /Unit: 1.925/- (Incl. of all taxes)

BEAU & BELLE LIVER DETOX SYRUP[^]

Liver Detox Syrup is formulated with Ayurvedic herbs to support liver health and natural detoxification. It helps cleanse the body, improve digestion, and promote overall metabolic and liver wellness.

Key Benefits : Helps in jaundice, hepatosplenomegaly, chronic liver diseases, hepatitis, improves liver function, alcoholic liver diseases

EACH 10ML CONTAINS: GOKHRU-300MG, KUTKI-300MG, GILOY-300MG, BHRINGRAJ-500MG, BHUMI AMALAKI-300MG, MAKOY-400MG, NAGARMOTHA-300MG, AJMODA-400MG, SAUNTH-300MG, DALCHINI-200 MG, CHARILLA-300MG, KULTHA-200MG, KALA NAMAK-100MG, JEERA-300MG, KALIMIRCH-300MG, KALMEGH-100MG, PUNARNAVA-400MG, KASNI-300MG, CHITRAK-150MG, VASA-200MG, SHARPUNKHA-400MG, PITPAPRA-200MG, MULETHI-300MG, PATOL PATRA-100MG, TULSI-150MG, SOWA-150MG, VAIVIDANG-200MG, DARUHALDI-100MG, CHAVYA-100MG, GULABPHOOL-100MG

Dosage: 1 to 2 teaspoonful, twice/thrice a day before or after food or as directed by the physician.
Net Qty: 200 ml
MRP: 279/- (Incl. of all taxes)
USP /Unit: 1.40/- (Incl. of all taxes)



AYURVEDIC

PROPRIETARY
MEDICINE



BEAU & BELLE LIVER CARE CAPSULES[^]

Liver Care Tablets are formulated with Ayurvedic herbs to support healthy liver function. They help detoxify the body, promote metabolic balance, and maintain overall liver wellness.

Key Benefits : Supports healthy liver function, aids detoxification, and improves digestion.

EACH CAPSULE CONTAINS: KUTKI-50MG, BHUI AMLA-50MG, PUNARNAVA-50MG, KASANI-50MG, KALMEGH-50MG, MAKOY-50MG, SARPANKHA-50MG, ROHITIKA-50MG, ALOEVERA-50MG, GILOY-25MG, KASMARD-25MG

Dosage: 1 to 2 capsules twice a day with fresh water or as directed by the physician.
Indication: Helpful in Acute viral hepatitis, liver cirrhosis, alcohol & drug induced liver damage.
Net Qty: 60 Capsules
MRP: 700/- (Incl. of all taxes)
USP /Unit: 11.66/- (Incl. of all taxes)



HORMONAL HEALTH MANAGEMENT RANGE

LIFESTYLE,
STRESS, POOR SLEEP, IRREGULAR EATING HABITS, AND
ENVIRONMENTAL FACTORS CAN DISTURB HORMONAL BALANCE.
EFFECTIVE HORMONAL HEALTH MANAGEMENT IS ESSENTIAL
FOR MAINTAINING METABOLISM, MOOD STABILITY,
REPRODUCTIVE HEALTH, AND OVERALL WELL-BEING. A
HOLISTIC HORMONAL HEALTH MANAGEMENT RANGE HELPS
REGULATE HORMONES NATURALLY, IMPROVE ENERGY LEVELS,
SUPPORT EMOTIONAL BALANCE, AND PROMOTE LONG-TERM
HEALTH AND VITALITY.



AYURVEDIC

PROPRIETARY
MEDICINE



BEAU & BELLE THYROID CARE CAPSULES^

Thyroid Care Capsules are formulated with Ayurvedic herbs to support healthy thyroid function. They help maintain hormonal balance, boost metabolism, and promote overall endocrine wellness.

Key Benefits : For thyroid gland disorder, goiter. It works in hyper & hypo thyroids.

EACH CAPSULE CONTAINS: KANCHNAR-125MG, KISHORE GUGGAL-125MG, ASHWAGANDHA-50MG, TULSI-50MG, MULETHI-50MG, BRAHMI-50MG PASANDBHED-25MG, SAUNTHI-10MG, PIPPALI-10MG, KALI MIRCH-5MG

Dosage: 1 to 2 capsules twice a day with fresh water or as directed by the physician.
Indication: Supports healthy thyroid function, helps maintain hormonal balance
Net Qty: 60 Capsules
MRP: 700/- (Incl. of all taxes)
USP /Unit: 11.66/- (Incl. of all taxes)

BEAU & BELLE CYST CARE TABLETS^

Cyst Care Tablets are formulated with Ayurvedic herbs to support reproductive and urinary health. They help manage cyst-related discomfort, promote hormonal balance, and support overall wellness.

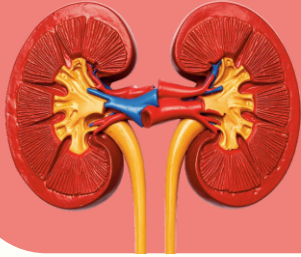
Key Benefits : Cyst Care Tablets improve improper hormonal balance, controls mood swings, provide relief from muscle cramps and regulates ovulation and menstrual cycle.

EACH TABLET CONTAINS: ASHOK CHAL-275MG, SHATAVAR-100MG, MOCHRAS-100MG, PIPPALI-50MG, SONTHI-50MG, RAS SINDUR-60MG, HEERA BOL-50MG, CHIKANI SUPARI-50MG, VANG BHASAM-15MG

Dosage: 1 to 2 Tablets twice a day with fresh water or as directed by the physician.
Indication: Supports reproductive and urinary health, helps manage cyst-related discomfort
Net Qty: 60 Tablets
MRP: 750/- (Incl. of all taxes)
USP /Unit: 12.50/- (Incl. of all taxes)



KIDNEY HEALTH MANAGEMENT RANGE



POOR HYDRATION, UNHEALTHY DIETS, STRESS, AND TOXIN EXPOSURE CAN BURDEN KIDNEY FUNCTION. EFFECTIVE KIDNEY HEALTH MANAGEMENT IS ESSENTIAL FOR PROPER FILTRATION, FLUID BALANCE, AND TOXIN REMOVAL FROM THE BODY. A HOLISTIC KIDNEY HEALTH MANAGEMENT RANGE HELPS SUPPORT URINARY HEALTH, IMPROVE KIDNEY FUNCTION, REDUCE DISCOMFORT, AND PROMOTE LONG-TERM WELLNESS AND VITALITY.



BEAU & BELLE KIDNEY STONE TABLETS[^]

Kidney Stone Tablets are formulated with Ayurvedic herbs to support urinary tract health. They help prevent stone formation, promote detoxification, and maintain overall kidney wellness.

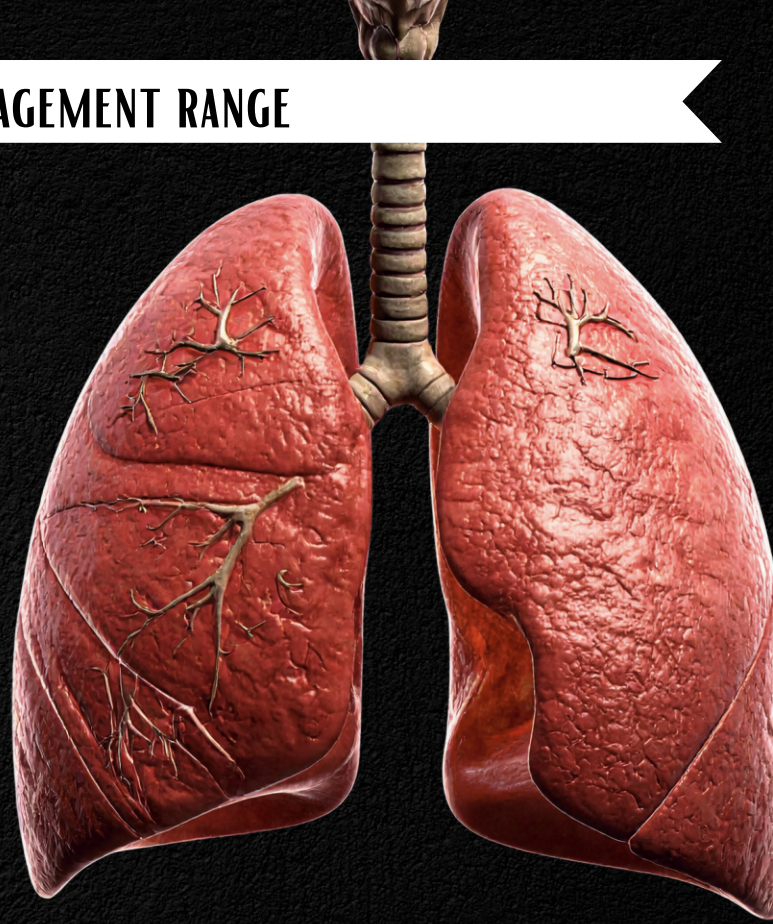
Key benefits: Kidney Stone Crush Tablets have natural diuretic properties that help ease urinary discomfort and burning sensations. They support the breaking and dissolving of kidney and urinary stones while improving overall kidney function.

EACH TABLET CONTAINS: GOKHRU-150MG, PUNARNAVA-125MG, PASANDBHED-100MG, SHWET PARPATI-75MG, HARZZUL YAHUD BHASAM-25MG, KULATH-75MG, SHUDH SHILAJIT-50MG, APAMARG KSHAR-25MG, GOND-25MG

- Dosage: 1 to 2 tablets twice a day or as directed by the physician.
 Indication: Helps balance Vata and Pitta doshas and support kidney and urinary health.
 Net Qty: 60 Tablets
 MRP: 750/- (Incl. of all taxes)
 USP /Unit: 12.50/- (Incl. of all taxes)

LUNGS HEALTH MANAGEMENT RANGE

POLLUTED ENVIRONMENT, EXPOSURE TO SMOKE, DUST, ALLERGENS, AND FREQUENT INFECTIONS CAN WEAKEN LUNG HEALTH. EFFECTIVE LUNGS HEALTH MANAGEMENT IS ESSENTIAL TO SUPPORT CLEAR AIRWAYS, IMPROVE BREATHING CAPACITY, AND STRENGTHEN RESPIRATORY FUNCTION. A HOLISTIC LUNGS HEALTH MANAGEMENT RANGE HELPS CLEANSE THE RESPIRATORY SYSTEM, REDUCE CONGESTION, ENHANCE IMMUNITY, AND PROMOTE LONG-TERM RESPIRATORY WELLNESS.



AYURVEDIC

PROPRIETARY
MEDICINE



BEAU & BELLE COUGH SYRUP^

Cough Syrup is formulated with Ayurvedic herbs to soothe the throat and support respiratory health. It helps relieve cough, reduce irritation, and promote clear and healthy airways.

Key Benefits : Beau & Belle Cough Syrup is enriched with natural Ayurvedic herbs to provide relief from cough and throat irritation. It soothes the respiratory tract, reduces mucus and congestion, supports healthy lung function, and strengthens immunity, promoting overall respiratory wellness.

EACH 10ML CONTAINS: VASAKA-500MG, KANTKARI-200MG, KAIPHAL-100MG, LASUDI-50MG, MULETHI-50MG, HANSRAJ-25MG, BHARANGI-25MG

Dosage: 1 to 2 teaspoonful , thrice a day before or after food or as directed by the physician.
Net Qty: 100 ml
MRP: 200/- (Incl. of all taxes)
USP /Unit: 2/- (Incl. of all taxes)

BEAU & BELLE LUNG DETOX SYRUP^

Lung Detox Syrup is formulated with Ayurvedic herbs to support respiratory wellness. It helps cleanse the lungs, improve breathing, and promote overall respiratory health and vitality.

Key Benefits : Helps in Bronchial Asthma, Bronchitis, COPD, Sinusitis, Productive cough, Chest Congestion

EACH 10ML CONTAINS:TULSI-44%, DALCHINI-22%, SHUNTHI-22%, KRISHNA MARICH-11%, PUDINA-0.33%, AJWAIN-0.33%, KARPOOR-0.33%

Dosage: 10-15ml twice or thrice a day or as directed by the physician.
Net Qty: 100 ml
MRP: 125/- (Incl. of all taxes)
USP /Unit: 1.25/- (Incl. of all taxes)



AYURVEDIC

PROPRIETARY
MEDICINE



BEAU & BELLE ASTHMA CARE TABLETS^

Asthma Care Tablets are formulated with Ayurvedic herbs to support respiratory health. They help maintain clear airways, improve lung function, and promote overall respiratory wellness.

Key Benefits : Asthma care tablets helps in increasing immunity, strength and stamina. it helps in chronic obstructive pulmonary disease, dyspnea, cough and cold.

EACH TABLET CONTAINS: VASA-125MG, TULSI-100MG, MULETHI-75MG, SHRINGI-75MG, KAPOOR KACHRI-75MG, GILOY-50MG, ABHRAK BHASAM-50MG, DHATURA SEED-50MG, BAHEDA-25MG, SONTN-25MG

Dosage: 1 to 2 tablets twice a day or as directed by the physician.

Indication: Helps balance Kapha and Vata doshas and support lung health.

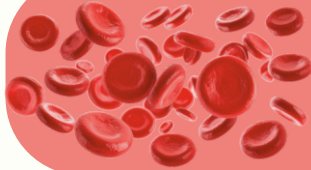
Net Qty: 60 Tablets

MRP: 650/- (Incl. of all taxes)

USP /Unit: 10.83/- (Incl. of all taxes)



BLOOD DETOX RANGE



UNHEALTHYFOOD HABITS, STRESS, AND TOXIN EXPOSURE CAN AFFECT BLOOD PURITY AND OVERALL HEALTH. EFFECTIVE BLOOD DETOXIFICATION IS ESSENTIAL TO CLEANSE IMPURITIES, SUPPORT HEALTHY CIRCULATION, AND IMPROVE ORGAN FUNCTION. A HOLISTIC BLOOD DETOX RANGE HELPS PURIFY THE BLOOD, ENHANCE SKIN HEALTH, BOOST IMMUNITY, AND PROMOTE OVERALL WELLNESS FROM WITHIN.

BEAU & BELLE SUNDARI JUICE^

Sundari Juice is a natural Ayurvedic blend formulated to promote healthy skin, hair, and overall beauty. It helps rejuvenate the body, enhance vitality, and support radiant wellness from within.

Key Benefits : Sundari Juice supports healthy skin from within and helps improve natural glow and complexion. It aids detoxification, balances hormones, and promotes overall beauty and wellness.

EACH 10ML CONTAINS: SUPARI-100MG, ASHOK-250MG, LODH-100MG, MOCHRAS-50MG, HEER BOL-25MG, PIPPAL-25MG, SONT-25MG

Dosage: 15-30ml twice a day or as directed by the physician.
 Net Qty: 500ml
 MRP: 750/- (Incl. of all taxes)
 USP /Unit: 1.5/- (Incl. of all taxes)





WEIGHT MANAGEMENT RANGE

IN TODAY'S SEDENTARY LIFESTYLE, UNHEALTHY EATING HABITS, STRESS, AND HORMONAL IMBALANCE OFTEN LEAD TO WEIGHT GAIN AND METABOLIC ISSUES. EFFECTIVE WEIGHT MANAGEMENT IS ESSENTIAL TO SUPPORT HEALTHY METABOLISM, IMPROVE ENERGY LEVELS, AND MAINTAIN OVERALL BODY BALANCE. A HOLISTIC WEIGHT MANAGEMENT RANGE HELPS ENHANCE FAT METABOLISM, SUPPORT DIGESTION, CONTROL APPETITE, AND PROMOTE SUSTAINABLE WEIGHT LOSS FOR LONG-TERM WELLNESS.

AYURVEDIC

PROPRIETARY
MEDICINE



BEAU & BELLE SLIM CARE JUICE^

A refreshing herbal juice blend designed to support healthy weight management, boost metabolism, and promote overall wellness naturally. Enjoy a tasty way to feel lighter, energized, and confident every day.

Key Benefits : Supports healthy weight management and boosts metabolism naturally. Helps improve digestion, detoxify the body, and enhance daily energy levels.

EACH 10ML CONTAINS:

Dosage: 15-30ml with lukewarm milk, before meal , twice a day or as directed by the physician.
Net Qty: 500ml
MRP: 850/- (Incl. of all taxes)
USP /Unit: 1.70/- (Incl. of all taxes)

BEAU & BELLE FAT BURNER POWDER^

BBeau & Belle Fat Burner Powder is a herbal formulation designed to support healthy weight management. It helps boost metabolism, enhance fat burning, and improve energy levels while supporting digestion.

Key Benefits : It helps increase metabolic activity, supports fat loss, controls appetite, reduces excess body fat, and promotes overall fitness and wellness.

EACH 100G CONTAINS: SAUNF-10%, TRIPHALA-7.50%, GREEN TEA-25%, VAIVIDANG-7.50%, BELGIRI-7.50%, SANAY-15%, AJWAIN-2.50%, METHI DANA-2.50%, KALAUNJI-5%, DALCHINI-7.5%, GURMAR-5%

Dosage: 1 to 2 teaspoon twice a day or as directed by the physician.
Net Qty: 100 gm
MRP: 450/- (Incl. of all taxes)
USP /Unit: 4.50/- (Incl. of all taxes)





BEAU & BELLE LIVE STRONG PROTEIN POWDER^

A refreshing herbal juice blend designed to support healthy weight management, boost metabolism, and promote overall wellness naturally. Enjoy a tasty way to feel lighter, energized, and confident every day.

Key Benefits : Supports healthy weight management and boosts metabolism naturally. Helps improve digestion, detoxify the body, and enhance daily energy levels.

EACH PACK CONTAINS: WHEY PROTEIN CONC., SOYA PROTEIN CONC., DHA, MALTODEXTRIN, VITAMIN B& MINERALS, BLEND, VANILLA, CHOCOLATE

Dosage: 1 Scoop with water/milk, once or twice a day or as directed by the physician.
 Net Qty: 500g
 MRP: 2499/- (Incl. of all taxes)
 USP /Unit: 49.98/- (Incl. of all taxes)

BEAU & BELLE AYUTRIM PROTEIN POWDER^ CHOCOLATE FLAVOR

Ayutrim Protein Powder (Chocolate Flavour) is a delicious and nutritious formulation designed to support healthy weight management. It provides high-quality protein to help control appetite, support metabolism, and maintain lean muscle while making your weight-management routine enjoyable.

Key Benefits : Supports weight management, helps build and maintain lean muscle mass, boosts metabolism, controls hunger cravings, and provides sustained energy.

EACH 25G CONTAINS: GARCINIA CAMBOGIA-100MG, FENUGREEK EXT-50MG, GREEN TEA EXT(50%)-50MG, GREEN COFFEE BEANS EXT-50MG, GINGER ROOT EXT-20MG, PSYLLIUM HUSK POWDER-0.04GM, LINOLEIC ACID-0.67GM, NATURAL CHOCOLATE FLAVOR

Dosage: 1 Scoop with water/milk, once or twice a day or as directed by the physician.
 Net Qty: 500 gm
 MRP: 2300/- (Incl. of all taxes)
 USP /Unit: 4.60/- (Incl. of all taxes)





BEAU & BELLE

APPLE CIDER VINEGAR EFFERVESCENT TABLETS^

Apple Cider Vinegar Effervescent Tablets offer a convenient and refreshing way to consume apple cider vinegar, helping support digestion, metabolism, and overall wellness without the strong taste.

Key Benefits : These tablets help improve digestion, support metabolism, assist in weight management, reduce bloating, and promote detoxification and gut health.

Dosage: Take 1 tablet with a glass of water, once a day before or after food or as directed by the physician.

Net Qty: 15 Tablets

MRP: 349/- (Incl. of all taxes)

USP /Unit: 23.26- (Incl. of all taxes)

Supports digestion

Reduces bloating

Boosts metabolism

Promotes Overall Wellness

Aids weight management

Promotes detoxification





“HEALTHY KIDS, HAPPY FUTURE”

GIVE YOUR CHILDREN THE BEST START WITH OUR SPECIALLY CRAFTED HEALTH SOLUTIONS. FROM IMMUNITY SUPPORT TO GROWTH AND VITALITY, OUR RANGE ENSURES EVERY CHILD THRIVES—BECAUSE STRONG BODIES AND SHARP MINDS TODAY BUILD A BRIGHTER TOMORROW.

BEAU & BELLE KIDS HEALTHY JUICE^

Beau & Belle Kids Healthy Juice is a nutritious herbal formulation specially designed to support children’s growth, immunity, and overall development. It helps improve appetite, digestion, and energy levels in a natural way.

Key Benefits : Kids Healthy Juice supports healthy growth and overall development in children while boosting natural immunity. It improves appetite and digestion, enhances energy levels, supports brain and body development, and promotes overall wellness.

EACH 10ML CONTAINS: NAGARMOTHA-100MG, VACH-50MG, VIDANG-25MG, ASHWAGANDHA-100MG, MULETHI-100MG, SONTH-50MG, AMLA-100MG, ELAICHI-10MG, MANJISTHA-50MG, GILOY-50MG, PIPPALI-10MG, BRAHMI-50MG

Dosage: 15-30ml twice a day or as directed by the physician.
 Net Qty: 500ml
 MRP: 850/- (Incl. of all taxes)
 USP /Unit: 1.7/- (Incl. of all taxes)





IN TODAY'S DIGITAL AGE, PROLONGED SCREEN TIME, POLLUTION, AND LIFESTYLE STRESS CAN STRAIN EYE HEALTH AND AFFECT VISION. EFFECTIVE EYE CARE MANAGEMENT IS ESSENTIAL TO SUPPORT CLEAR VISION, REDUCE EYE FATIGUE, AND PROTECT EYE HEALTH. A HOLISTIC EYE CARE RANGE HELPS NOURISH THE EYES, REDUCE STRAIN, IMPROVE FOCUS, AND PROMOTE LONG-TERM EYE WELLNESS.



BEAU & BELLE HERBAL EYE DROPS^

Beau & Belle Herbal Eye Drops are formulated with gentle herbal ingredients to soothe, cleanse, and refresh tired eyes. They help relieve irritation caused by screen exposure, pollution, and dryness while supporting overall eye comfort.

Key Benefits : Herbal Eye Drops help relieve eye strain, dryness, and irritation caused by screen exposure and environmental factors. They soothe, refresh, and cool the eyes while supporting overall eye comfort and wellness.

EACH 10ML CONTAINS: HARIDRA-50%, GULAB-50%

- Dosage: 15-30ml twice a day or as directed by the physician.
 Indication: Helpful in Dryness, Allergy, Strain, Irritation, Discomfort in eyes.
 Net Qty: 10ml
 MRP: 70/- (Incl. of all taxes)
 USP /Unit: 7.00/- (Incl. of all taxes)



WOMEN'S HEALTH NEEDS CHANGE WITH EVERY STAGE OF LIFE. OUR HEALTH MANAGEMENT RANGE IS THOUGHTFULLY DESIGNED TO SUPPORT ENERGY, HORMONAL BALANCE, IMMUNITY, AND OVERALL WELL-BEING—HELPING WOMEN FEEL STRONG, CONFIDENT, AND BALANCED EVERY DAY.



BEAU & BELLE FEMZKALP DIETARY TONIC^

Femzkalp Dietary Tonic is a herbal formulation specially designed to support female reproductive and hormonal health. It helps manage common women's health concerns such as leucorrhoea, irregular menstruation, menstrual cramps, and hormonal imbalances related to PCOD and PCOS, while promoting overall vitality and well-being.

Key Benefits : Femzkalp Dietary Tonic helps regulate menstrual cycles, reduce white discharge (leucorrhoea), and relieve menstrual cramps naturally. It supports hormonal balance in PCOD/PCOS, improves uterine health, boosts energy, and promotes overall female wellness.

EACH 10ML CONTAINS: HARIDRA-50%, GULAB-50%

Dosage: 1-2 teaspoons (5-10 ml) twice daily, or as directed by physician.

Indication: Indicated for leucorrhoea, irregular or painful menstruation, menstrual cramps, hormonal imbalance, PCOD/PCOS, weakness, and overall female reproductive health support.

Net Qty: 200ml

MRP: 385 /- (Incl. of all taxes)

USP /Unit: 1.925/- (Incl. of all taxes)

HEALTH MANAGEMENT RANGE FOR MEN

“STRENGTH, STAMINA
&
TOTAL WELLNESS”

**MEN'S HEALTH DEMANDS
CONSISTENT CARE IN TODAY'S FAST-PACED LIFE. OUR
HEALTH MANAGEMENT RANGE IS DESIGNED TO
SUPPORT ENERGY, ENDURANCE, IMMUNITY, AND
OVERALL VITALITY—HELPING MEN STAY ACTIVE,
FOCUSED, AND AT THEIR BEST
EVERY DAY.**





BEAU & BELLE KAAMSHAKTI TABLETS^

Kaamshakti Tablets are a herbal formulation designed to support men's sexual wellness and vitality. They help enhance stamina, strength, and performance while promoting overall reproductive health and confidence.

Key Benefits : Kaamshakti Tablets help improve stamina and energy levels, support libido and performance, enhance strength and endurance, and promote overall male vitality and wellness.

EACH TABLET CONTAINS: SWARAN BHASAM-9.5MG, CHANDI BHASAM-1.5MG, KESAR-5MG, MAKARDHWAJ-5MG, LAWANG-5 MG, LAUH BHASAM-10 MG, VANG BHASAM-10 MG, ABHRAK BHASAM-10MG, JAIPHAL-10MG, GOKSHURA-10MG, AKARKARA-10MG, TALIMKHANA-20MG, SHUDHA SHILAJIT-20MG,

Dosage: 1 to 2 tablets once a day or as directed by the physician.

Indication: For low stamina, reduced libido, fatigue, weakness, performance concerns, and overall men's sexual and reproductive health support.

Net Qty: 05 Tablets

MRP: 299/- (Incl. of all taxes)

USP /Unit: 59.80/- (Incl. of all taxes)

AYURVEDIC REFRESHMENT BLENDS

AYURVEDIC REFRESHMENT BLENDS ARE HERBAL ENERGY DRINK PREMIXES CRAFTED WITH TIME-TESTED AYURVEDIC INGREDIENTS TO PROVIDE NATURAL REFRESHMENT AND SUSTAINED ENERGY. THESE BLENDS HELP REJUVENATE THE BODY, REDUCE FATIGUE, AND SUPPORT DIGESTION AND IMMUNITY, OFFERING A HEALTHY AND REFRESHING ALTERNATIVE TO SUGARY AND SYNTHETIC ENERGY DRINKS FOR DAILY VITALITY AND WELLNESS.





BEAU & BELLE AYUTRIM ENERGY DRINK-LEMON GINGER^

Ayutrim Energy Drink (Lemon Ginger) is a refreshing Ayurvedic energy drink premix made with natural lemon and ginger extracts along with herbal nutrients. It provides instant hydration, boosts metabolism, and helps fight fatigue while offering a zesty, invigorating taste.

Key Benefits : Lemon Ginger provides natural energy and refreshment while helping boost metabolism and digestion. It reduces fatigue, supports immunity, keeps the body hydrated, and promotes overall vitality and wellness.

EACH PACK CONTAINS:GREEN TEA EXTRACT, ORANGE PEKOE EXTRACT, CAFFEINE.

Dosage: 1mix 1 gin 180ml of cold/hot water.
Net Qty: 50g
MRP: 910/- (Incl. of all taxes)
USP /Unit: 18.20/- (Incl. of all taxes)

BEAU & BELLE AYUTRIM ENERGY DRINK--TULSI HONEY^

Ayutrim Energy Drink (Tulsi Honey) is a refreshing Ayurvedic energy drink premix made with natural tulsi (holy basil) and honey extracts along with herbal nutrients. It provides instant hydration, supports immunity, and helps boost energy naturally while delivering a soothing, pleasant taste.

Key Benefits : Tulsi Honey provides natural energy and refreshment while supporting immunity and digestive comfort. It helps reduce fatigue, promotes hydration, and enhances overall vitality with the goodness of tulsi and honey.

EACH PACK CONTAINS:GREEN TEA EXTRACT,TULSI EXTRACT, CAFFEINE, HONEY

Dosage: 1mix 1 gin 180ml of cold/hot water.
Net Qty: 50g
MRP: 910/- (Incl. of all taxes)
USP /Unit: 18.20/- (Incl. of all taxes)





BEAU & BELLE

AYUTRIM ENERGY DRINK-KASHMIRI KAWA-KESAR^

Ayutrim Energy Drink (Kashmiri Kawa-Kesar) is a revitalizing Ayurvedic energy drink premix inspired by traditional Kashmiri kawa spices and saffron (kesar). Blended with herbal ingredients, this premium mix offers a rich flavor while boosting energy, aiding digestion, and providing a refreshing wellness boost.

Key Benefits : Kashmiri Kawa-Kesar provides natural, sustained energy and refreshment while supporting digestion and metabolism. It helps reduce fatigue, promotes hydration, enhances immunity with herbal goodness, and supports overall vitality with the goodness of saffron and traditional spices.

EACH PACK CONTAINS:GREEN TEA EXTRACT, KASHMIRI KAWAMIX,KESAR STIMA, CAFFEINE.

Dosage: 1mix 1 gin 180ml of cold/hot water.
Net Qty: 50g
MRP: 910/- (Incl. of all taxes)
USP /Unit: 18.20/- (Incl. of all taxes)

BEAU & BELLE

AYUTRIM ENERGY DRINK--ELAICHI CINNAMON^

Ayutrim Energy Drink (Elaichi Cinnamon) – A refreshing Ayurvedic energy drink premix that combines the soothing aroma of Elaichi with the warm spice of Cinnamon. Boost your energy naturally, enhance digestion, and enjoy a revitalizing drink anytime, the Ayurvedic way.

Key Benefits : Boosts energy and mental alertness naturally. Supports digestion while keeping you active throughout the day.

EACH PACK CONTAINS:GREEN TEA EXTRACT,ELAICHI, CINNAMON, CAFFEINE

Dosage: 1mix 1 gin 180ml of cold/hot water.
Net Qty: 50g
MRP: 910/- (Incl. of all taxes)
USP /Unit: 18.20/- (Incl. of all taxes)





PERSONAL CARE PRODUCT RANGE

DISCOVER A COMPLETE RANGE OF SKIN, HAIR, AND BODY CARE ESSENTIALS CRAFTED TO BRING OUT YOUR NATURAL RADIANCE. FROM GENTLE CLEANSERS AND NOURISHING CREAMS TO REVITALIZING HAIR TREATMENTS AND WELLNESS SOLUTIONS, EVERY PRODUCT IS DESIGNED WITH CARE, QUALITY, AND YOUR DAILY NEEDS IN MIND.

EMBRACE A ROUTINE THAT NOT ONLY PROTECTS AND NOURISHES BUT ALSO ENHANCES YOUR CONFIDENCE—BECAUSE PERSONAL CARE IS MORE THAN A ROUTINE, IT'S A LIFESTYLE.

EXPLORE, INDULGE, AND FEEL THE DIFFERENCE.



BEAU & BELLE
HERBAL MIX FACE & BODY WASH^

Enriched with Wheat Germ Oil, Moringa, Aloe Vera, Argan Oil, and Olive, this gentle herbal wash cleanses, nourishes, and revitalizes your skin. Ideal for daily use, it leaves your face and body soft, smooth, and naturally glowing..

Net Qty: 200ml
MRP: 239/- (Incl. of all taxes)
USP /Unit: 1.49/- (Incl. of all taxes)

BEAU & BELLE
ULTRA HYDRATING FACE WASH^

Infused with Saffron, Chandan, Kojic Acid, and Aloe Vera, this face wash deeply hydrates, brightens, and refreshes your skin. Perfect for daily use, it leaves your face soft, radiant, and glowing naturally.

Net Qty: 100ml
MRP: 249/- (Incl. of all taxes)
USP /Unit: 2.49/- (Incl. of all taxes)





**BEAU & BELLE
ANTI-AGEING FACE SERUM^**

A potent blend of Retinol, Niacinamide, Vitamin C, Glycolic & Kojic Acid, Aloe Vera, Vetiver, Rose, Lemongrass, and Lemon, this serum reduces fine lines, evens skin tone, and restores youthful radiance. Lightweight and fast-absorbing, it nourishes, rejuvenates, and protects your skin daily.

Net Qty: 30ml
MRP: 799/- (Incl. of all taxes)
USP /Unit: 26.63/- (Incl. of all taxes)

**BEAU & BELLE
B&B GLOW CREAM^**

A luxurious cream designed to brighten, hydrate, and revitalize your skin. Enriched with natural extracts, it gives your face a radiant, healthy glow while keeping it soft and nourished all day.

Net Qty: 15 g
MRP: 450/- (Incl. of all taxes)
USP /Unit: 30/- (Incl. of all taxes)





BEAU & BELLE

KUMKUMADI FACE CREAM^

Enriched with Kumkumadi Oil, Neem, Saffron, Aloe Vera, Papaya, Turmeric, Manjistha, Calendula, Harsingar, and Neroli Essential Oil, this cream brightens, nourishes, and rejuvenates your skin naturally. Perfect for daily use, it helps even skin tone, reduce pigmentation, and impart a radiant glow.

Net Qty: 50g
MRP: 1250/- (Incl. of all taxes)
USP /Unit: 25/- (Incl. of all taxes)

BEAU & BELLE

NON OILY SUNSCREEN^

A lightweight, non-greasy lotion enriched with Almond, Jojoba, Sesame, Aloe Vera, and Niacinamide. It protects your skin from harmful UV rays, prevents tanning, and enhances natural fairness while keeping your skin soft, nourished, and radiant.

Net Qty: 60ml
MRP: 499/- (Incl. of all taxes)
USP /Unit: 8.31/- (Incl. of all taxes)





BEAU & BELLE MOISTURISING BODY LOTION[^]

Powered with Active Hydra System and enriched with Aloe Vera, Shea Butter, and Vitamin E, this lotion deeply hydrates, softens, and nourishes your skin. Ideal for daily use, it leaves your body smooth, supple, and radiant all day.

Net Qty: 200ml
MRP: 399/- (Incl. of all taxes)
USP /Unit: 1.99/- (Incl. of all taxes)

BEAU & BELLE ALOEVERA FACE & BODY GEL[^]

A refreshing gel enriched with Aloe Vera, Lemon, Jasmine, and Rose, it soothes, hydrates, and rejuvenates your skin. Perfect for face and body, it calms irritation, cools the skin, and leaves it soft and glowing naturally.

Net Qty: 200g
MRP: 299/- (Incl. of all taxes)
USP /Unit: 1.50/- (Incl. of all taxes)





BEAU & BELLE HAIR SHAMPOO^

Enriched with Wheat Protein, Green Tea, Rosemary Oil, and Vitamin E, this gentle shampoo cleanses, strengthens, and revitalizes your hair. It reduces breakage, nourishes the scalp, and leaves hair soft, smooth, and naturally healthy.

Net Qty: 300ml
MRP: 499/- (Incl. of all taxes)
USP /Unit: 1.66/- (Incl. of all taxes)

BEAU & BELLE HAIR CONDITIONER^

Enriched with Aloe Vera, Keratin, Vitamin E, and Almond Oil, this conditioner smoothenes, nourishes, and strengthens your hair. It detangles, reduces frizz, and leaves hair soft, silky, and naturally healthy.

Net Qty: 200 ml
MRP: 499/- (Incl. of all taxes)
USP /Unit: 2.49/- (Incl. of all taxes)





BEAU & BELLE HAIR OIL^

Enriched with Bhringraj, Hibiscus, Manjistha, and Coconut Milk, this nourishing hair oil strengthens roots, promotes hair growth, and prevents hair fall. Regular use leaves your hair soft, shiny, and healthy naturally.

Net Qty: 100ml
MRP: 899/- (Incl. of all taxes)
USP /Unit: 8.99/- (Incl. of all taxes)

BEAU & BELLE HAIR SERUM^

Enriched with Jojoba Oil and Vitamin E, this lightweight serum smoothens, nourishes, and tames frizz, giving your hair a healthy, glossy, and manageable finish. Perfect for all hair types, it protects and revitalizes hair instantly.

Net Qty: 45ml
MRP: 499/- (Incl. of all taxes)
USP /Unit: 11.00/- (Incl. of all taxes)





BEAU & BELLE ROSE SOAP^

Infused with the essence of Rose, this gentle soap cleanses, softens, and refreshes your skin. It nourishes naturally while leaving a subtle floral fragrance and a radiant glow.

Net Qty: 100g
MRP: 75/- (Incl. of all taxes)
USP /Unit: 0.75/- (Incl. of all taxes)

BEAU & BELLE HALDI & CHANDAN SOAP^

Enriched with Turmeric (Haldi) and Sandalwood (Chandan), this herbal soap cleanses, brightens, and soothes your skin naturally. Regular use reduces dullness, evens skin tone, and leaves a soft, radiant glow.

Net Qty: 100g
MRP: 75/- (Incl. of all taxes)
USP /Unit: 0.75/- (Incl. of all taxes)





BEAU & BELLE

DANT FRESH-TOOTHPASTE[^]

A powerful herbal blend of Akarkara, Miswak, Babool, Apamarg, Clove Oil, Mol Shri, Haldi, Mulathi, Majufal, Tumburu, Kuljan, and Fitkari, this toothpaste cleanses, protects, and strengthens teeth and gums naturally. Regular use prevents cavities, reduces sensitivity, and leaves your mouth fresh and healthy.

Key Benefits:

- Strengthens teeth & gums naturally
- Prevents cavities and reduces sensitivity
- Herbal freshness for long-lasting oral care

Net Qty: 125 g
MRP: 129/- (Incl. of all taxes)
USP /Unit: 1.032/- (Incl. of all taxes)



HOME & HYGIENE RANGE

STEP INTO A WORLD OF CLEANLINESS AND CARE WITH OUR COMPLETE HOME & HYGIENE RANGE. FROM HERBAL SOAPS AND HAND WASHES TO SURFACE CLEANERS, AIR FRESHENERS, AND ORAL CARE ESSENTIALS, EVERY PRODUCT IS DESIGNED TO PROTECT, REFRESH, AND NURTURE YOUR HOME AND FAMILY.

EXPERIENCE DAILY HYGIENE MADE SIMPLE, EFFECTIVE, AND NATURAL, ENSURING A HEALTHY, SAFE, AND FRAGRANT ENVIRONMENT FOR EVERYONE.





BEAU & BELLE LAVENDER HAND WASH^

Infused with Lavender extract, this gentle hand wash cleanses, nourishes, and refreshes your hands. Its soothing fragrance leaves hands soft, hydrated, and delicately fragrant after every wash.

Net Qty: 250ml
MRP: 130/- (Incl. of all taxes)
USP /Unit: 0.52/- (Incl. of all taxes)



BEAU & BELLE DISH WASH-LEMON^

Powered with the natural freshness of Lemon, this dish wash effectively removes grease and stains while being gentle on hands. It leaves your dishes sparkling clean with a refreshing citrus scent.

Net Qty: 500ml
MRP: 140/- (Incl. of all taxes)
USP /Unit: 0.28/- (Incl. of all taxes)



BEAU & BELLE FLOOR CLEANER^

A powerful cleaning solution that removes dirt, stains, and germs from all types of floors. Its long-lasting freshness leaves your home sparkling clean, hygienic, and pleasantly fragrant.

Net Qty: 500ml
MRP: 150/- (Incl. of all taxes)
USP /Unit: 0.30/- (Incl. of all taxes)





athuliam
ayurveda

ATHULIAM AYURVEDA PVT LTD

3872/12, First Floor, Kanhaiya Nagar, Delhi-110035

For enquiry/complaint contact : 9811482182

Email : athuliamayurveda@gmail.com

Web : www.athuliam.com